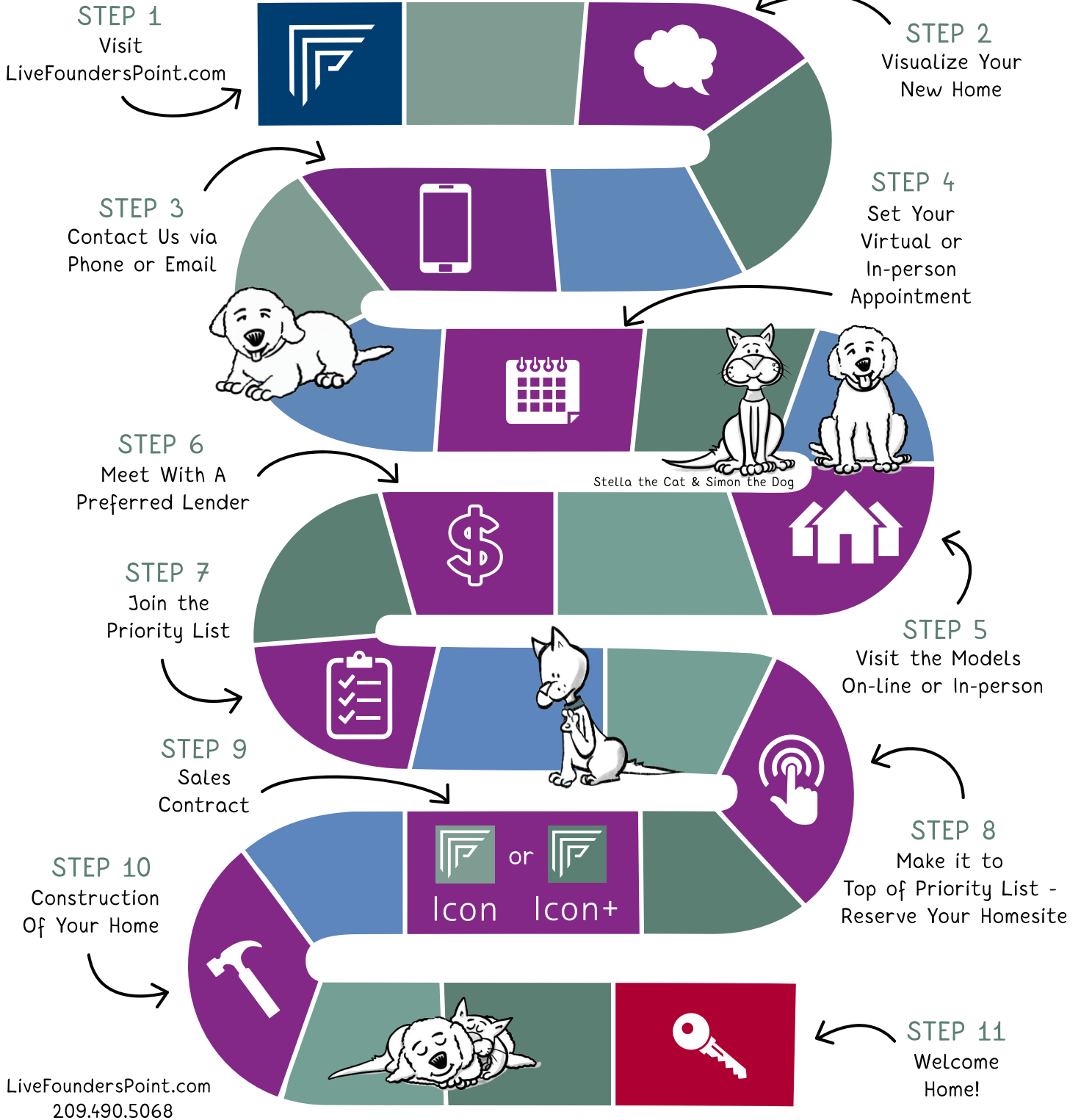


# ICON & ICON+ BUYING PROCESS



**FLORSHEIM**  
HOMES

Represented by ESCALA PROPERTIES  
CA DRE # 00526755

**FITZPATRICK**  
H • O • M • E • S  
*A Family Classic Since 1963*

Founders Point is the union of two local builders, Fitzpatrick Homes and Florsheim Homes, uniting to create an amazing planned community. The homebuyers at Founders Point get the advantage of buying a new home from this dynamic duo known for building quality homes with superior craftsmanship.

Florsheim Homes and Fitzpatrick Homes reserve the right to change or update this 'Buying Process' at any time and without notice. We may also pre-sell homes and/or update base sales pricing or option pricing without prior notice. Homes being sold by either The Fitzpatrick Company, a CA corporation (Fitzpatrick Homes CA DRE# 01303859) or Modesto Roselle LLC (Florsheim Homes CA DRE# 00526755). Broker is Escala Properties. Equal Housing Opportunity. Prices subject to change and prior sale. Selected lots require premiums and redetermined options. Preliminary information is subject to change and modification by Florsheim Homes, Fitzpatrick Homes or Escala Properties at any time. September, 2022

