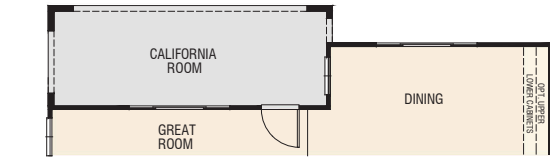
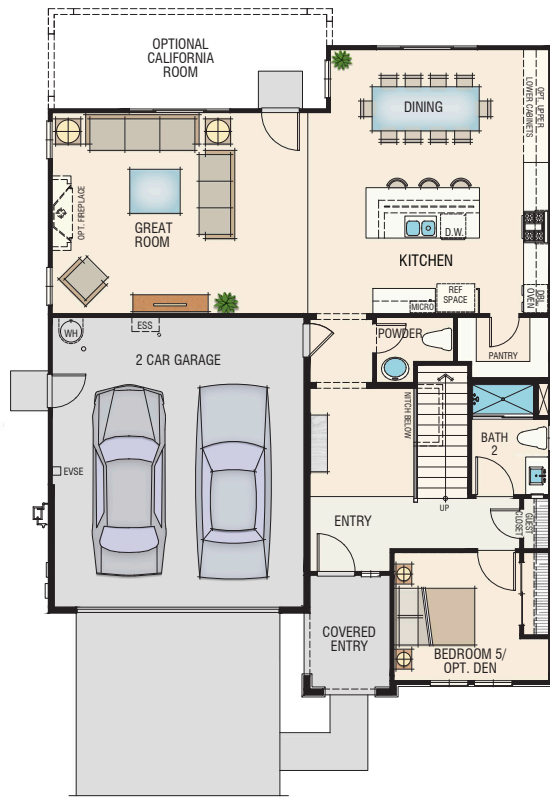


ECHO RESIDENCE 4 - THE XXXX

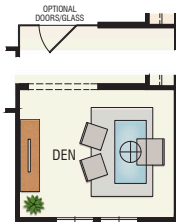
2,645 SF | 5 Bedroom | 3.5 Bath | Dining | Great Room | 2 Car Garage | Two Story



C Optional California Room



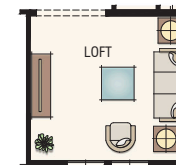
FIRST FLOOR



A Optional Den
(Replaces Bedroom 5)



SECOND FLOOR



C Optional Loft
(Replaces Bedroom 4)

Florsheim Homes reserves the right to make modifications to elevations, floorplans and features without notice. Elevations and floorplans are artists' conceptual drawings and show upgraded landscaping. Square footages are approximate and vary per elevation and options chosen. Porches, windows and room configurations vary per plan and elevation. Garage doors shown depict standard windows; however, front doors are sometimes shown with optional window upgrades and patterns. Quantity and placement of exterior coach lights may vary, depending on plan and masonry.